

行車影音記錄器

FULL HD (1920*1080) / H.264 / 輕巧型卡片機

快速使用手冊

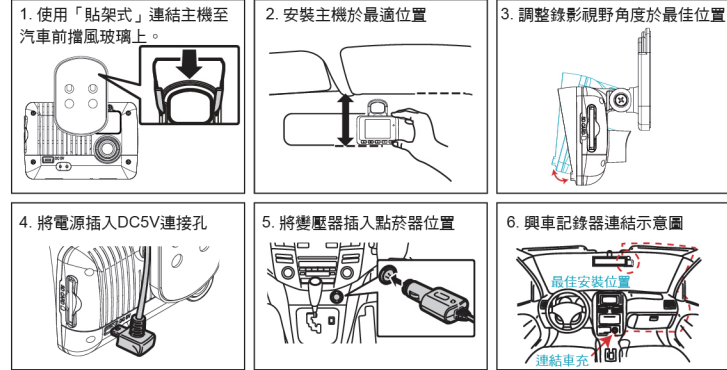


使用之前，請先查看包裝內所提供的下列物品。如您發現物品不齊全，請聯絡您購買零售商。

產品配件：點菸頭轉5V變壓器 / 支架固定架 / 簡易說明書

- ※記憶卡/遙控器並不隨機提供，請另外購買。
- ※產品規格如有變更，恕不另行通知。

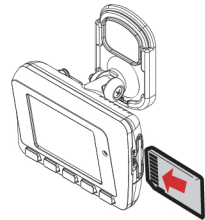
汽車安裝步驟示意圖



注意事項

- 安裝前請確認您的擋風玻璃是乾淨和乾燥的。並請安裝在平坦的玻璃上，而不是有弧度的地方。
- 使用車用固定架時，請慎選位置。切勿將機身放在會阻礙開車視線的位置。
- 機器安裝時，需安裝在雨刷可以清洗到的區域。
- 時間設定請在OSD設定頁調整時間，影像檔案才可以顯示正常時間。

記憶卡安裝



- ※概算表僅供參考，記錄真實量會依影像變動率有所不同。
- ※記憶卡錄滿後依檔案錄製先後順序覆蓋，自動進行循環錄影。

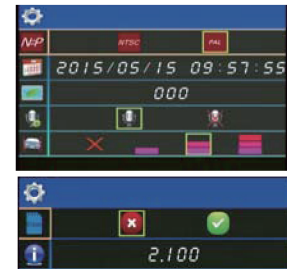
連續錄影記憶卡容量概算

容量 影像品質	8G	16G	32G
	高 120分	240分	480分

注意事項

- 記憶卡建議使用Class 10以上 SDHC Card (需使用8G以上記憶卡)
- 請勿使用MicroSD卡轉SD卡進行錄影，以免因震動導致轉接卡接觸不良而產生錄影異常。
- 記憶卡有讀寫次數與壽命問題，建議定期檢查與使用電腦播放影像，確保記憶卡仍可正常讀寫。

OSD 選單



- NTSC / PAL
- G-Sensor
- 萬年曆
- 格式化記憶卡
- 螢幕節能
- 版本顯示
- 麥克風開關

錄影及停止錄影

- 開機/錄影
電源啟動，並等待約20秒鐘後，即開機完成，即表示開始錄影。
- 關機/停止錄影
電源關閉，即為停止錄影，此時內建記憶體會延遲斷電約3秒供完整結檔，待按鍵燈熄滅後即可取下記憶卡讀取所攝錄之檔案。

注意事項

- 開機畫面與即時檢視畫面呈現方式，可能因軟體更新或改版而有所改變，恕不另行通知
- 強制錄影鍵有強制性，在任何狀態下觸發強制錄影鍵皆會跳回錄影畫面啟動強制錄影。

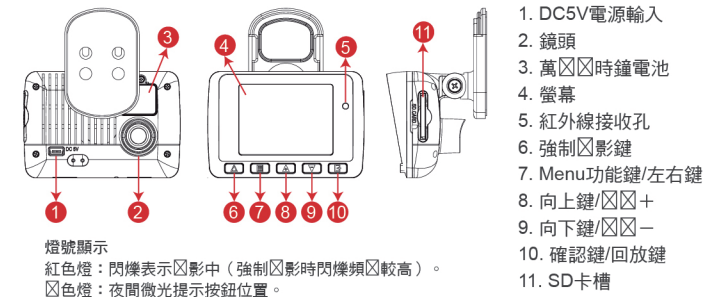
播放器



請至官網下載最新播放器。
*要執行此軟體須安裝 DirectX 9.0 以上。



產品外觀



安全注意事項

請先試錄影片，然後播放，以確定機器操作正常。請注意，如因本機配件，包括記憶卡的故障，導致不能拍攝影像或不能讀取影像格式而引起的任何損失，本公司、其附屬機構及經銷商皆不負賠償責任。

使用本產品之前，請確定您已閱讀下列的安全注意事項。並請確定您操作產品的方法是正確的。

- 請存放本器材於兒童與嬰兒無法觸碰的地方。
- 請只使用建議的電源。
- 請勿使用外接式(多孔)點菸器，避免因點菸器電壓不穩導致產品當機、失去電力而無法錄影。
- 點菸頭電源與本產品電源頭，請“務必”密合緊實。
- 請勿嘗試將產品拆開、改裝或加熱。
- 避免使產品丟落地上或受猛烈撞擊。
- 要避免受傷，請勿在產品跌下後或損毀時觸碰產品的內部。
- 如產品冒煙、發出異味或有其他異常，請立刻停止操作產品。
- 請勿使用有機溶劑，如酒精、苯或油漆稀釋劑清潔產品。
- 請勿讓產品接觸到水（如海水）或其他液體。
- 請勿讓任何液體或異物進入機器。
- 請避免端子或插頭接觸到金屬物件（如針或鑰匙）或污漬。
- 請避免在潮濕或多塵的地方使用、放置或存放產品。

Vehicle Video Recorder

FULL HD (1920*1080) / H.264 / Light And Compact

Quick Start Guide

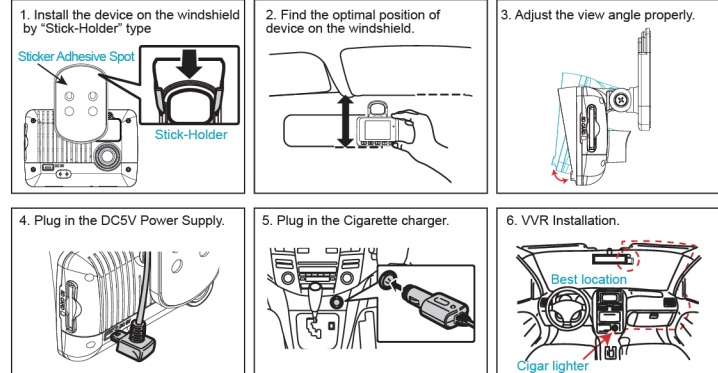


Please contact your local dealer if you have any question on this product.

Accessories: Cigar Lighter Adapter / Bracket / Quick User Guide

- * Storage card / Remote Controller are not included as free provision.
- * Specifications shall be changed subject to necessary update.

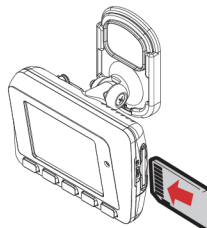
Installation Guide



Notice

- This device should be installed on the windshield of clean and dry.
- The best location must be in the range of the moving wipes.
- Format the memory card in the DVR prior the very first recording.
- Set time zone and timing on OSD.

SD Card Installation



The chart below is for reference only.
The length of recording time can be varied due to variation in image size and video quality.

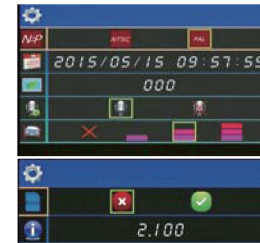
Record Time Estimation

Capacity	8Gb	16Gb	32Gb
Quality			
High	120 Min	240 Min	480 Min

Warning

- Recommended Class 10 or above 8GB at least.
- If the memory card is not formatted by the player, the device will automatically erase all the data.
- Please DO NOT use micro SD card adaptor. The adaptor could cause recording stability.
- Memory card has its limit on written times. It is suggested to check SD card files with PC player Carbox player periodically.

OSD Menu



- NTSC / PAL
- Time setting
- Eco-saving monitor
- Microphone
- G-Sensor
- Format
- Firmware Version

Recording & Stop Recording

1. Reboot/Record

Reboot the DVR system ready in 20 seconds. DVR starts recording.

2. Power Off/Stop

It stops recording once power is off, build-in capacitor offer 3 seconds extra power to make sure file is well stored. User can remove the memory card after the indication light is off.

Warning

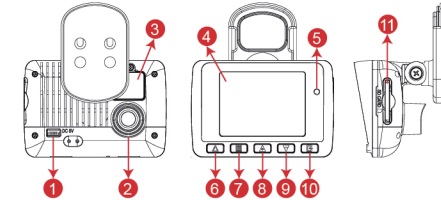
- Recording window pops up and force recording activates immediately when press emergency bottom.
- If SD card is removed or damaged during recording, machine will show blue screen and ask user to insert valid SD card. If SD card is not inserted, machine will turn into protection mode and screen will turn black. To start up machine, please insert SD card and re-powering the video recorder. (unplug and plug in the recharger)

PC Viewer



Please go to our Website to download vacron viewer
*Reminder- DirectX 9.0 is required.

Product Diagram



- DC5V Power In
- Lens
- Battery
- TFT LCD
- IR Receiver
- Emergency Record
- Menu/Left & Right
- Up/Light +
- Down/Light -
- Enter/Play
- SD Card Slot

LED Indicator:

Red: Under normal operation-recording
Fast Blinking Red: Force recording
Green : Low light indicator

Safety Precautions

Please Take and review some testing videos initially to make sure the images were recorded correctly.

Please note that manufacturer, its subsidiaries and affiliates, and its distributors are not liable for consequential damages arising from any malfunction of main device accessory, including memory device that results in the failure of an image to be recorded or to be recorded in a way that is machine readable.

Before using the product, please ensure that you read the safety precautions described below. Always ensure that the product is used correctly.

- Use only recommended power sources.
- Do not attempt to disassemble, alter or apply heat to the product.
- DO NOT apply multi cigarette lighter adapters-Applying such devices will cause unstable power input to damage the vehicle video recorder.
- Please always make sure all power connectors are fully secured.
- Avoid dropping or subjecting the product to severe impacts.
- To avoid the risk of injury, do not touch the interior of the product if it has been dropped or otherwise damaged.
- Stop using the product immediately if it emits smoke, a strange smell, or otherwise behaves abnormally.
- Do not use organic solvents such as alcohol, benzene, or thinner to clean the product.
- Do not let the product come into contact with water (e.g. sea water) or other liquids.
- Do not allow liquids or foreign objects to enter the VVR.
- Do not place the VVR near or in direct flame.
- Do not handle the power cord with wet hands.
- Do not use the equipment in a manner that exceeds the rated capacity of the electrical outlet or wiring accessories.
- Do not use if the power cord or plug are damaged, or not fully plugged into the outlet.
- Do not allow dirt or metal objects (such as pins or keys) to contact the terminals or plug.
- Avoid using, placing or storing the product in the humid or dusty areas.